

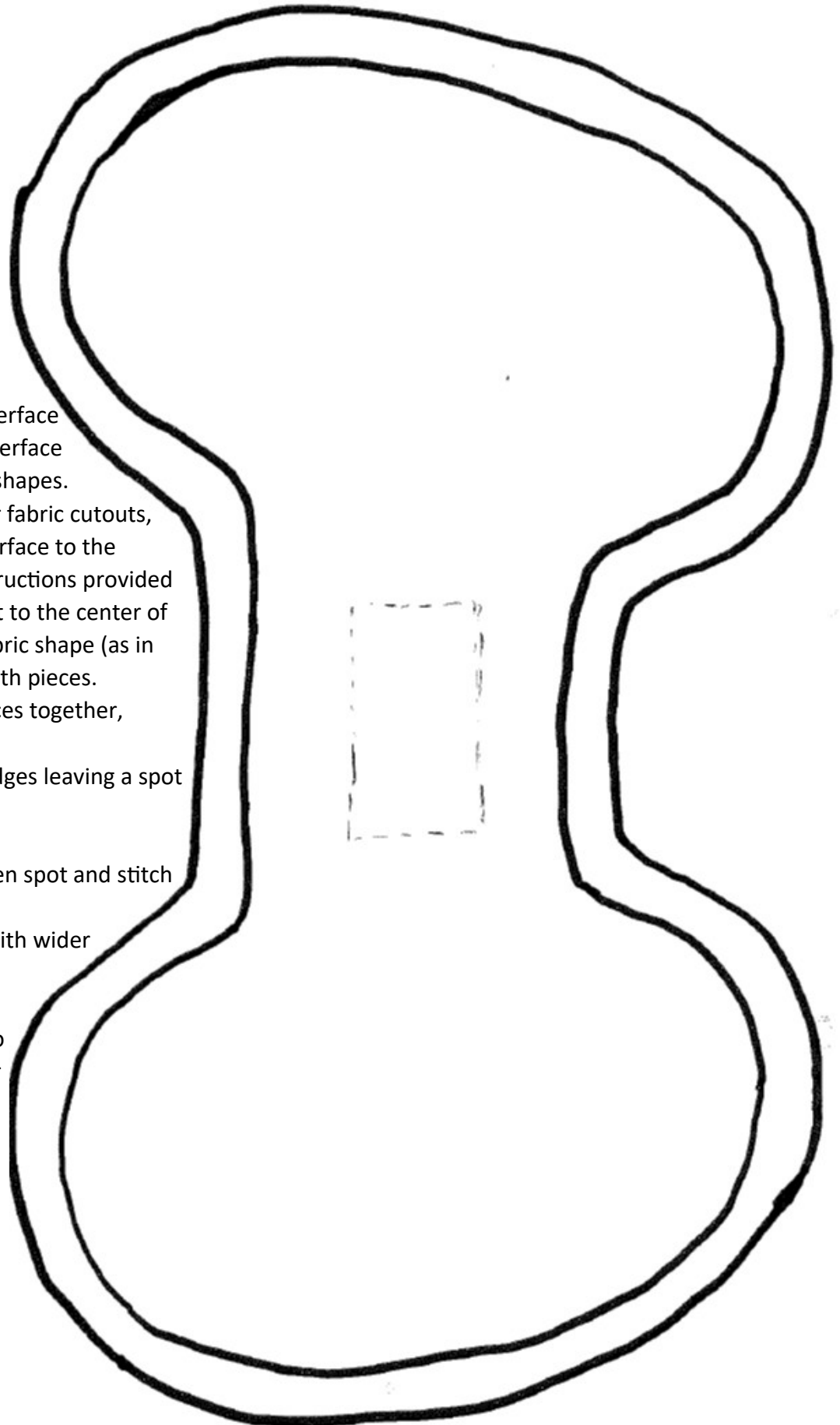
CHICKEN SADDLE INSTRUCTIONS

1. Make 2 copies of this page.
2. Cut out the larger shape from one copy.
3. Cut out the smaller shape from the other copy.
4. Fold saddle fabric with right sides together and pin larger pattern shape to fabric. Cut out. This will be top and bottom of saddle.
5. Fold heavier weight fusible interface. Pin smaller pattern shape on and cut out. This provides 2 pieces that will add durability to the saddle.
6. On the wrong side of the larger fabric cutouts, match the shape of fusible interface to the same shape fabric. Follow instructions provided with fusible interface to bond it to the center of the wrong side of the larger fabric shape (as in this pattern pic). Do this for both pieces. This allows for extra fabric around edges for seams and makes turning it right side out easier after sewing.
7. Cut a 10-inch piece of 3/8" elastic. If you have a larger breed chicken, cut a 12-inch piece.
8. Place right sides of fabric saddle together. Pin ends of elastic to places indicated in attached pics. Elastic should be in between top and bottom fabric pieces. Be sure it is not going to be twisted.
9. Using 1/4" seams, sew around edges leaving the top, smaller portion open for turning right side out. Turn right side out.
10. Tuck in raw fabric edges on smaller portion and stitch down.
11. Place middle of elastic piece along top smaller portion of saddle and fold fabric to make a casing for the elastic (see pics). Stitch down casing with elastic inside.
12. Add wing protectors, if desired - see separate pattern page and instructions.

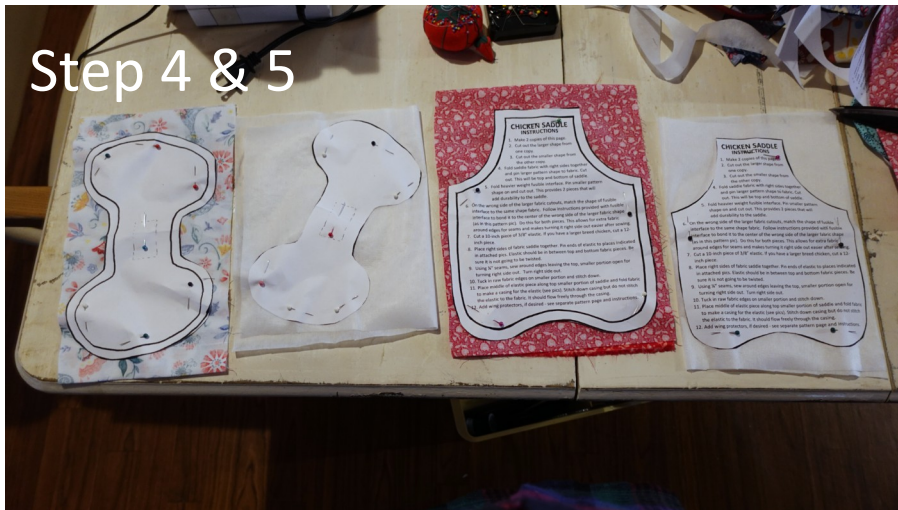
WING PROTECTOR

INSTRUCTIONS

1. Make 2 copies of this page.
2. Cut out larger shape from one copy.
3. Cut out smaller shape from the other copy.
4. With fabric right sides folded together, pin larger shape to fabric and cut out to make 2 larger shapes.
5. With heavier weight fusible interface folded, pin smaller shape to interface and cut out to make 2 smaller shapes.
6. On the wrong side of the larger fabric cutouts, match the shape of fusible interface to the same shape fabric. Follow instructions provided with fusible interface to bond it to the center of the wrong side of the larger fabric shape (as in this pattern pic). Do this for both pieces.
7. Place wrong sides of fabric pieces together, matching edges.
8. Using $\frac{1}{4}$ " seams, sew around edges leaving a spot open for turning right side out. Turn right side out.
9. Tuck in raw fabric edges on open spot and stitch down.
10. Pin wing protector to saddle with wider part toward the saddle.
(see attached pic)
11. Stitch in a rectangular shape to attach center of wing protector to saddle. This stitch shape will better hold the wing protector in its place without flopping around.



Step 4 & 5



Step 6



Step 8



Step 8



Step 9



Step 9



Step 10



Step 11



Step 11



